



PRE-FLIGHT BULLETIN FLIGHT FOLDER **STO SAR**
 ISSUED 20240427 0624 BY
 FLIGHT PLANNING CENTRE SWEDEN

Departure

ESSA/ARN/STOCKHOLM/ARLANDA

METAR 270620Z 07007KT 8000 -RA BKN004 02/01 Q1013 TEMPO SHRA BKN005 BKN030CB=
 TAFBT 270530Z 2706/2806 08005KT 9999 SCT005 BKN015
 TEMPO 2706/2709 4500 SHRA BKN004 BKN020CB
 PROB40 2709/2715 BKN008
 PROB40 2722/2804 0300 FZFG VV003=

Destination

ESSV/VBY/VISBY

METAR 270620Z 17011KT CAVOK 08/04 Q1011=
 TAFBT 270530Z 2706/2715 16010KT CAVOK
 BECMG 2708/2710 26010KT=

Alternates/En-route

EFMA/MHQ/MARIEHAMN

METAR 270620Z AUTO 18008KT 9999 SCT005 04/03 Q1015=
 TAFBT 270527Z 2706/2715 19006KT 9999 BKN005
 BECMG 2706/2709 BKN015
 TEMPO 2709/2714 12010KT 7000 SHRASN BKN012 SCT020CB
 PROB40 TEMPO 2712/2714 BKN008=

W/T Values from GRIB

VALID 270600 (BASED ON 270000 DATA)

=====

	FL050	FL080	FL100	FL140	FL180	FL210	FL240	FL270								
ESSA-ESSV	19026	20026	21026	21026	22035	23041	23051	23052								
WC TEMP	-024	-03	-022	-09	-021	-13	-021	-21	-021	-28	-022	-34	-024	-39	-022	-45

VALID 270600 (BASED ON 270000 DATA)

=====

	FL050	FL100	FL180	FL240	FL300	FL340	FL390	FL450	FL530									
ESSA-ESSV	19026	21026	22035	23051	23049	23037	20017	18017	17016									
WC TEMP	-024	-03	-021	-13	-021	-28	-024	-39	-020	-50	-018	-51	-015	-47	-016	-47	-016	-48

VALID 271200 (BASED ON 270000 DATA)

=====

	FL050	FL080	FL100	FL140	FL180	FL210	FL240	FL270								
ESSA-ESSV	21025	22025	22026	23029	24036	23038	23040	22045								
WC TEMP	-017	-02	-016	-07	-015	-11	-013	-19	-014	-26	-015	-33	-017	-40	-025	-46

VALID 271200 (BASED ON 270000 DATA)

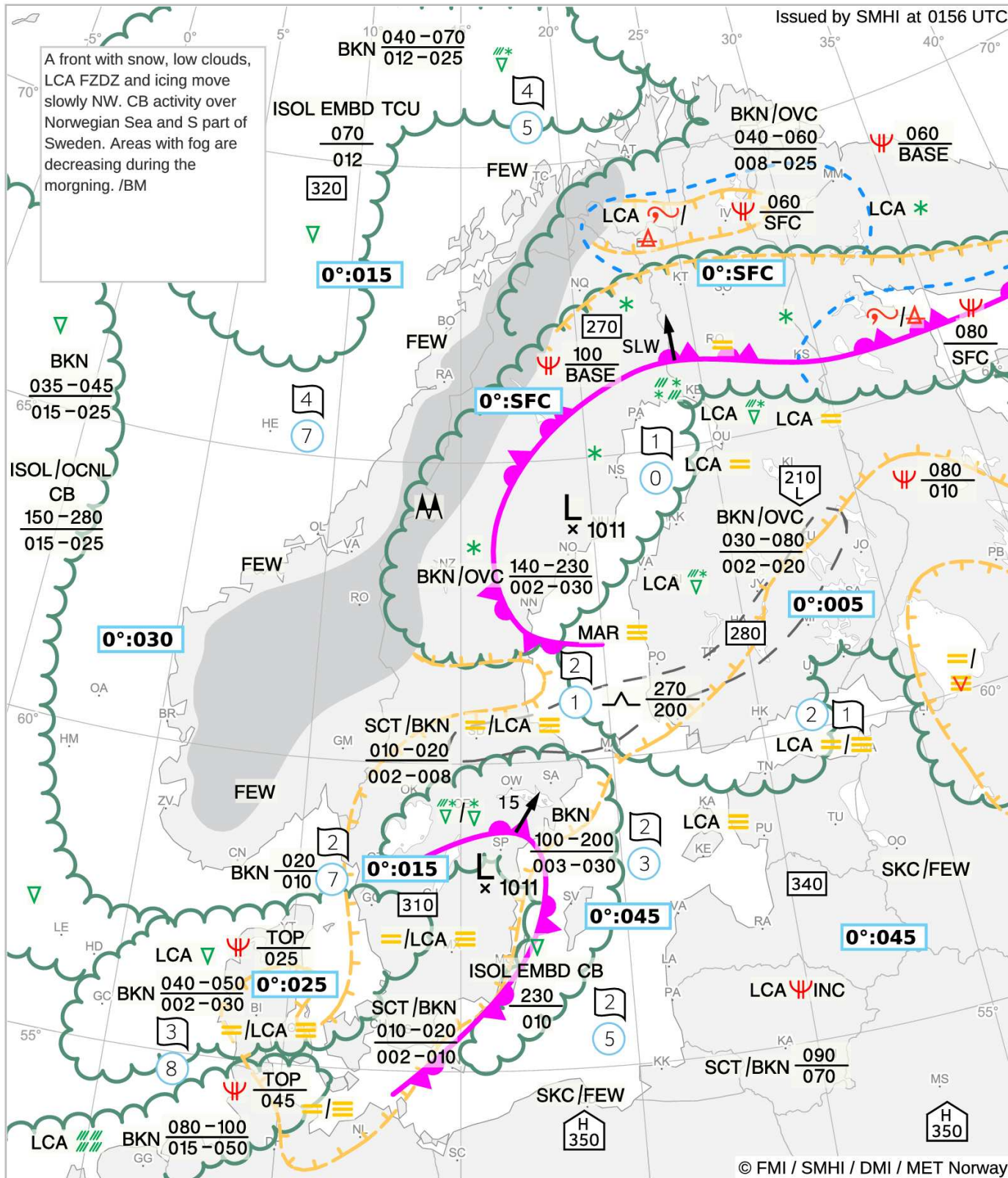
=====

	FL050	FL100	FL180	FL240	FL300	FL340	FL390	FL450	FL530									
ESSA-ESSV	21025	22026	24036	23040	22050	22038	21025	19017	18015									
WC TEMP	-017	-02	-015	-11	-014	-26	-017	-40	-032	-51	-025	-52	-017	-48	-016	-47	-015	-48

SWC SFC-FL450

valid time 06 UTC 27.04.2024

Issued by SMHI at 0156 UTC



A front with snow, low clouds, LCA FZDZ and icing move slowly NW. CB activity over Norwegian Sea and S part of Sweden. Areas with fog are decreasing during the morning. /BM

Fixed time prognostic chart
 CB and TCU imply MOD or SEV
 ICE/TURB, CB also implies TS and/or GR. Units: speed in knots; pressure (QNH) in hPa; levels in hectofeet AGL below FL050, otherwise in flight levels. Low ceiling/visibility is not detailed in mountain areas (shown with grey shading).

- Symbols and lines**
- Significant weather (SIGWX)
 - Ceiling < 1000ft and/or visibility < 5km
 - High level turbulence
 - Low level turbulence
 - Change in icing
 - Moderate/Severe turbulence
 - Moderate/Severe icing
 - Rain, Snow, Sleet
 - Showers

- Freezing rain/drizzle
- Drizzle, Snow grains
- Thunderstorm, Hail
- Mist, Fog, Freezing fog
- Haze, Smoke, Blowing snow
- Mountain waves, Mountain obscuration
- 0°C level
- Sea surface temperature, Sea state (index)

- Surface wind > 30kt
 - Convergence line
 - Severe squall line
 - Position, speed, direction and level of max wind
 - Tropopause level
 - Tropopause high, Tropopause low
- More information:
<https://www.northavimet.com/NSWC>

© FMI / SMHI / DMI / MET Norway